

May 22, 2018

Mr. William Wu
Assistant Engineer (Environmental)
New York State Department of Environmental Conservation
Division of Environmental Remediation, Remedial Bureau C, Section A
625 Broadway, 11th Floor
Albany, New York 12233-7017

**RE: Notice of Intrusive Activities
Removal of On-Site Gas Manifold and Associated Piping
Patchogue Former Manufactured Gas Plant Site
Village of Patchogue, Suffolk County, New York
Site No. 1-52-182**

Dear Mr. Wu:

This letter provides notification to the New York State Department of Environmental Conservation (NYSDEC) of an upcoming intrusive activity at the Patchogue Former Manufactured Gas Plant (MGP) site (herein referred to as the "Site"). The intrusive activity is taking place at the Site (234 West Main Street) (Refer to Attachment 1). However, the work may encroach on the adjacent, off-site property located immediately to the east of the Site at 212 West Main Street. The 212 West Main Street property is improved with a single, two-story mixed use (office and warehouse) building which is currently vacant and under lease by National Grid.

The work will include clearing and grubbing vegetation, locating the underground portion of the gas manifold and associated piping (refer to Attachment 2) using ground penetrating radar (GPR) and other utility locating measures such as applying a signal to the manifold and tracing the signal, retaining the service of an environmental contractor to excavate and expose the gas piping, determining if the gas piping is active and abandoned, removing the gas manifold and associated piping, and capping the ends of the piping at the property line. The approximate limits of the work area are shown in Attachment 1. This work is being performed to decommission/remove the gas manifold and associated piping prior to implementation of the full-scale remedy.

The majority of the proposed work is located outside the limits of remediation. Work within the limits of remediation is limited to the removal of the gas manifold and capping of the line if found to be active. Based on the location of the work (outside the limits of the remediation) and the shallow depths of these excavations, it is not anticipated that the materials subject to remediation (e.g., source materials) will be encountered. National Grid is being proactive in their approach and will manage all excavated materials as impacted material. All soils removed as part of the work will either be stockpiled (on and covered with plastic sheeting) or containerized, sampled for waste characterization parameters per the requirements of the selected disposal facility, profiled, and disposed of off-site at a facility permitted to accept these types of wastes. The gas manifold and piping will be segregated separately and the materials visually inspected and sampled for waste characterization parameters. Based on visual inspection of the pipe and the results of the waste

characterization sampling, National Grid's Environmental Management Division will be consulted on the proper decontamination and off-site disposal of the gas manifold and associated piping.

National Grid has retained Miller Environmental to complete the work described above and will use 40-hour trained personnel to manage these soils.

It is anticipated that approximately 250 cubic yards (cy) of soil will be excavated as part of the removal, cutting, and capping of the gas manifold and associated piping. Miller Environmental will characterize, transport, and dispose of the excavated soils and piping removed during the work at an off-site, facility licensed and permitted to accept the various types of wastes.

Brown and Caldwell Associates (BC), on behalf of National Grid's Site Investigation and Remediation Group, will provide environmental oversight of the proposed work. The intrusive activities will be conducted in accordance with the Health and Safety Plan (HASP) for the Site. BC will implement a Community Air Monitoring Plan (CAMP) that meets the requirements of the New York State Department of Health's (NYSDOH's) Generic CAMP. All work will be completed in accordance with the provisions of the Interim Site Management Plan (ISMP) established for the Site. BC will monitor the soils being excavated during the removal of the gas manifold and the associated piping.

Reporting

A brief letter report will be provided once the field activities have been completed.

Schedule

The gas manifold removal work is scheduled to begin in June 2018 and be completed in approximately 10 working days.

If you have any questions, please feel free to contact me at (516) 545-2568.

Sincerely,

 for

Sarah Aldridge
Project Manager, Site Investigation and Remediation

Attachments:

Attachment 1: Figure C-101: Existing Site Conditions Plan

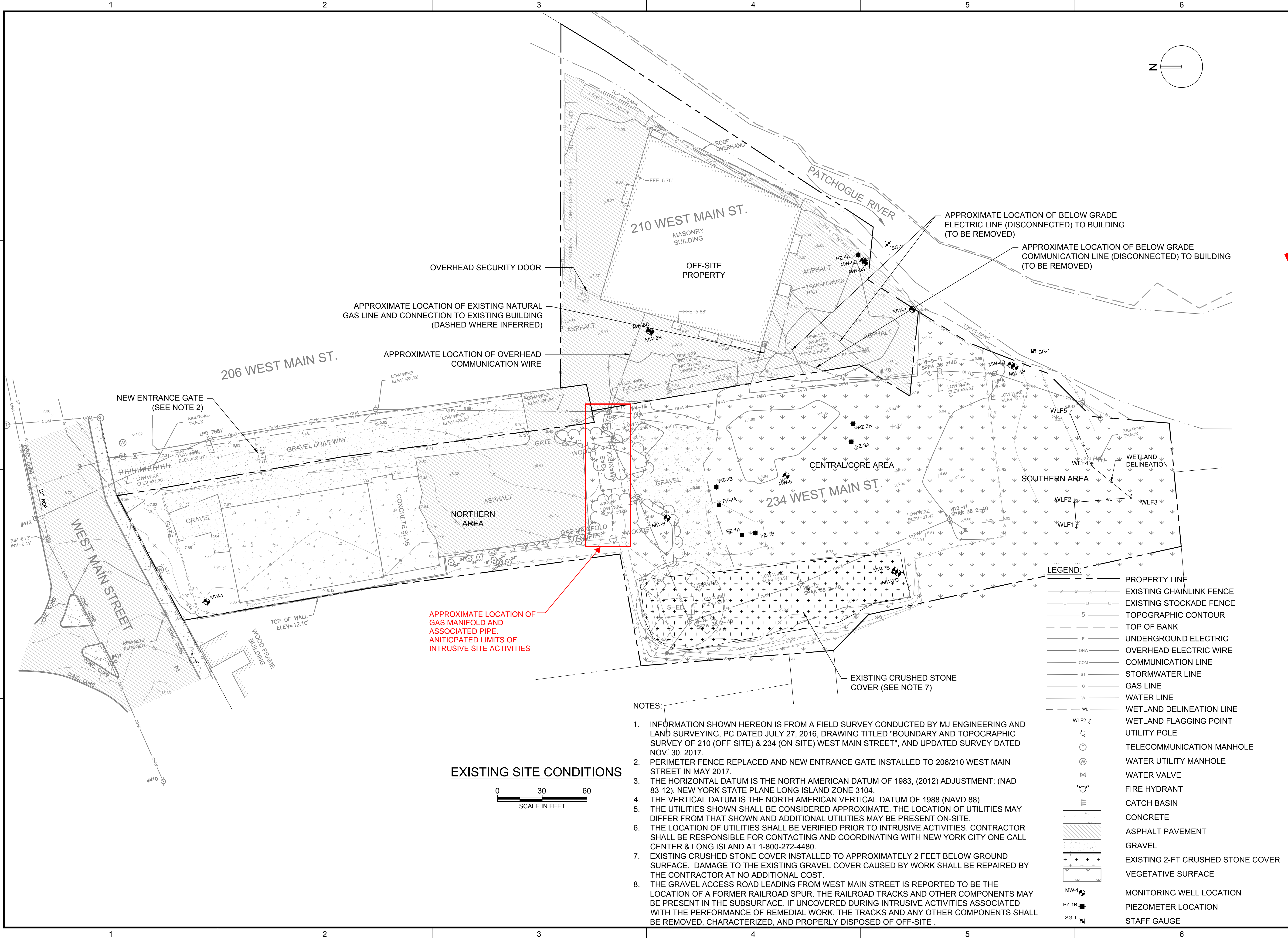
Attachment 2: Photographic Log

cc: J. Nealon (NYSDOH)

bc: W. Ryan (National Grid)
F. Murphy, Esq. (National Grid) w/o attachments
K. Bogatch (BC)

Attachment 1: Figure C-101: Existing Site Conditions Plan

Path: P:\NATIONAL_GRID\PATCHOGUE\149322_NG_PATCHOGUE_RD\1 CAD\2 SHEETS\C-CIVIL FILENAME: C-101.DWG PLOT DATE: 2/11/2018 5:15 PM CAD USER: ROBERT NEAR



Brown AND Caldwell

BROWN AND CALDWELL ASSOCIATES
2 PARK WAY, SUITE 2A
UPPER SADDLE RIVER, NJ

WARNING: IT IS A VIOLATION OF THE NEW YORK STATE EDUCATION LAW ARTICLE 145, SECTION 720(2) FOR ANY PERSON, UNLESS HE/SHE IS ACTING UNDER THE DIRECTION OF A LICENSED PROFESSIONAL ENGINEER, TO ALTER THIS ITEM IN ANY WAY. IF THIS ITEM BEARING THE SEAL OF AN ENGINEER IS ALTERED, THE ALTERING ENGINEER SHALL AFFIX TO THE ITEM HIS/HER SEAL AND THE NOTATION "ALTERED BY FOLLOWED BY HIS/HER SIGNATURE AND THE DATE OF SUCH ALTERATION, AND A SPECIFIC DESCRIPTION OF THE ALTERATION."

DRAFT

MAREK OSTROWSKI,
N.Y. PROFESSIONAL ENGINEER
N.Y. LIC NO. 073661

NATIONAL GRID
PATCHOGUE
FORMER MGP SITE
234 WEST MAIN
STREET
VILLAGE OF
PATCHOGUE, NY

REMEDIAL DESIGN
DRAWINGS (90-95%)

REVISIONS		
REV	DATE	DESCRIPTION
0	02/12/18	95% RDR SUBMITTAL TO NYSDEC

LINE IS 2 INCHES
AT FULL SIZE

DESIGNED: C. OLIVEIRA
DRAWN: A. SANTIAGO / R. NEAR
CHECKED: P. PETRINO
CHECKED: K. BOGATCH
APPROVED: M. OSTROWSKI

FILENAME
C-101.DWG
BC PROJECT NUMBER
149322
CLIENT PROJECT NUMBER

CIVIL

EXISTING SITE
CONDITIONS

DRAWING NUMBER
C-101
SHEET NUMBER
3 OF 20

Attachment 2: Photographic Log

Photographic Log
Patchogue Former Manufactured Gas Plant Site
Notice of Intrusive Activities



Date 5/3/2017 Site#/Name: Patchogue, NY

Photographers Initial EB

Description: Gas manifold facing north.



Date 5/3/2017 Site#/Name: Patchogue, NY

Photographers Initial EB

Description: Gas manifold facing northwest.

Photographic Log
Patchogue Former Manufactured Gas Plant Site
Notice of Intrusive Activities



Date 5/3/2017 Site#/Name: Patchogue, NY

Photographers Initial EB

Description: Gas manifold facing northeast.